

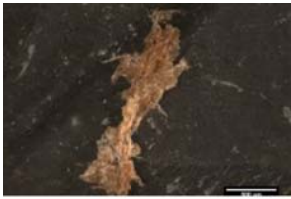
Images of RS10 (*Picea*-whittling) residues

using Leica MZ16 and MZFLIII stereomicroscopes; all are extended depth of focus

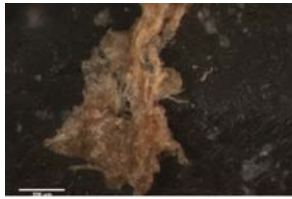
The key to the images is at the beginning of the document.

The images published in this pdf are those that were used in the training portion of the experiment reported in Monnier et al. 2012, *J. Arch. Sci.* For questions, please contact Gilliane Monnier at monni003@umn.edu.

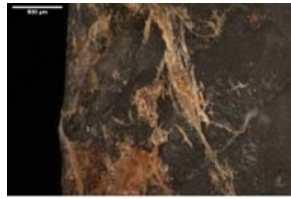
Naming conventions: 'RS' = Residue Study; 'D' = Dorsal side; 'V' = Ventral side; 'a', 'b', etc. = residue label; '25', '50', '115' = magnification used



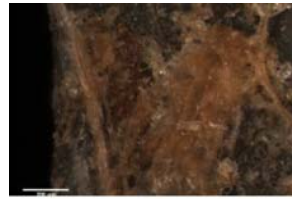
RS10D_a_50_comp.tif



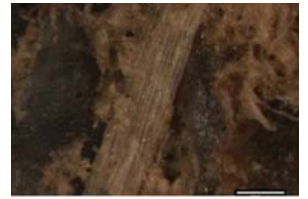
RS10D_a_115_comp.tif



RS10D_b_50_comp.tif



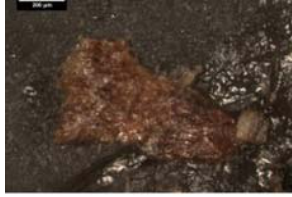
RS10D_b_115_comp.tif



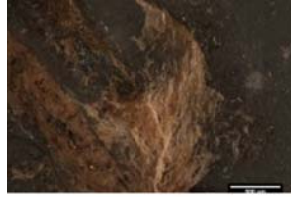
RS10D_c_115_comp.tif



RS10D_d_50_comp.tif



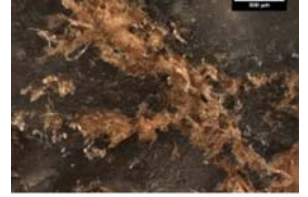
RS10D_d_115_comp.tif



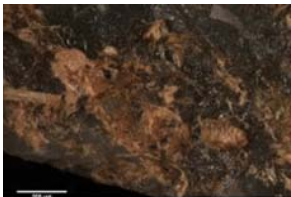
RS10D_e_50_comp.tif



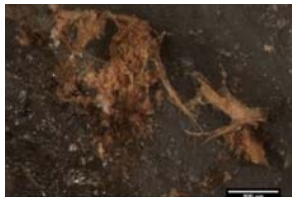
RS10D_e_115_comp.tif



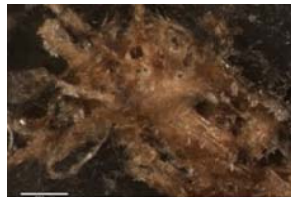
RS10D_f_50_1_comp.tif



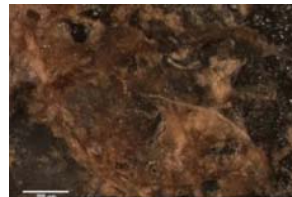
RS10D_f_50_2_comp.tif



RS10D_f_50_3_comp.tif



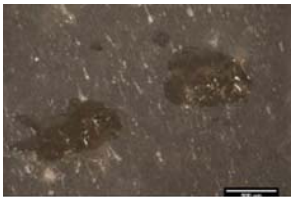
RS10D_f_115_1_comp.tif



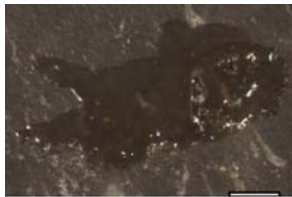
RS10D_f_115_2_comp.tif



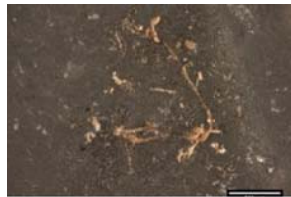
RS10D_f_115_3_comp.tif



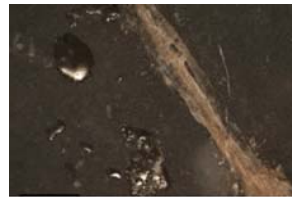
RS10V_a_50_comp.tif



RS10V_a_115_comp.tif



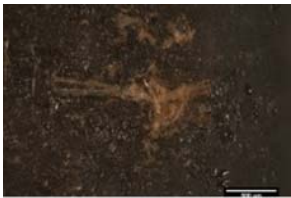
RS10V_b_50_comp.tif



RS10V_d_50_comp.tif



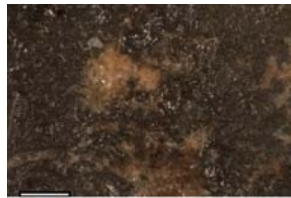
RS10V_d_115_comp.tif



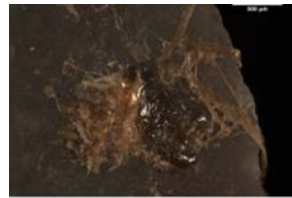
RS10V_e_50_2_comp.tif



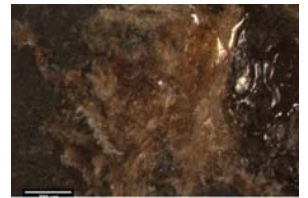
RS10V_e_50_comp.tif



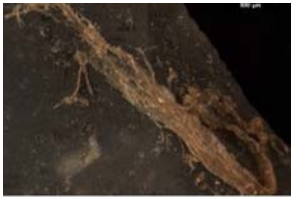
RS10V_e_115_comp.tif



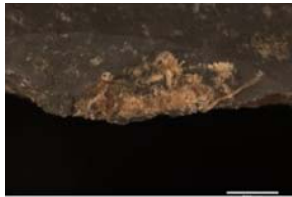
RS10V_f_50_comp.tif



RS10V_f_115_comp.tif



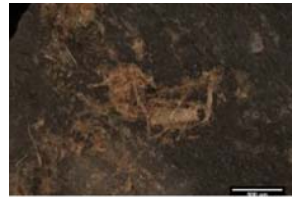
RS10V_g_50_comp.tif



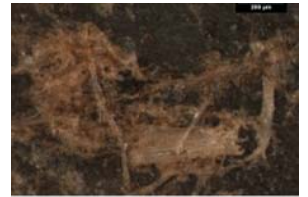
RS10V_h_50_comp.tif



RS10V_h_115_comp.tif



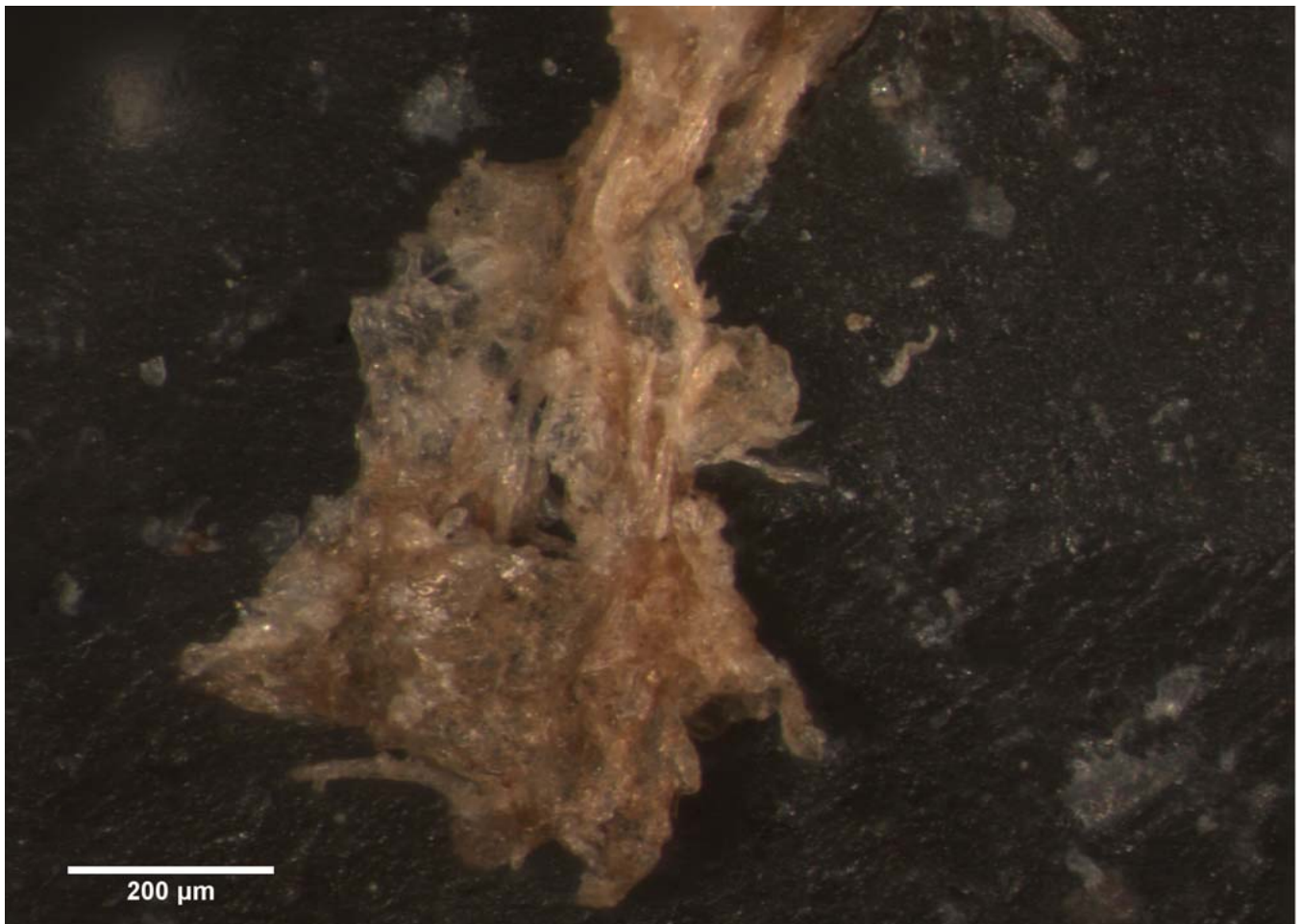
RS10V_i_50_comp.tif

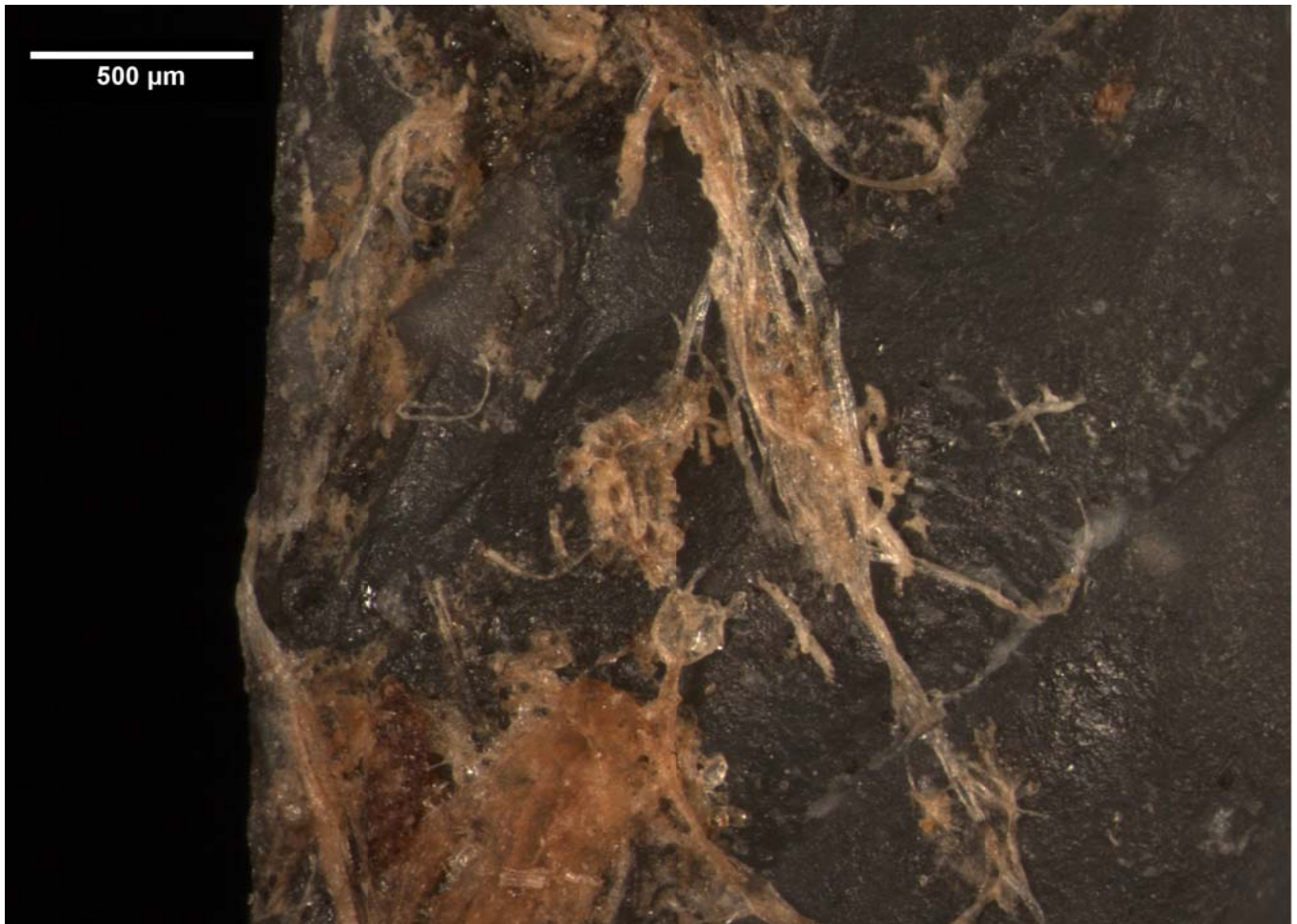


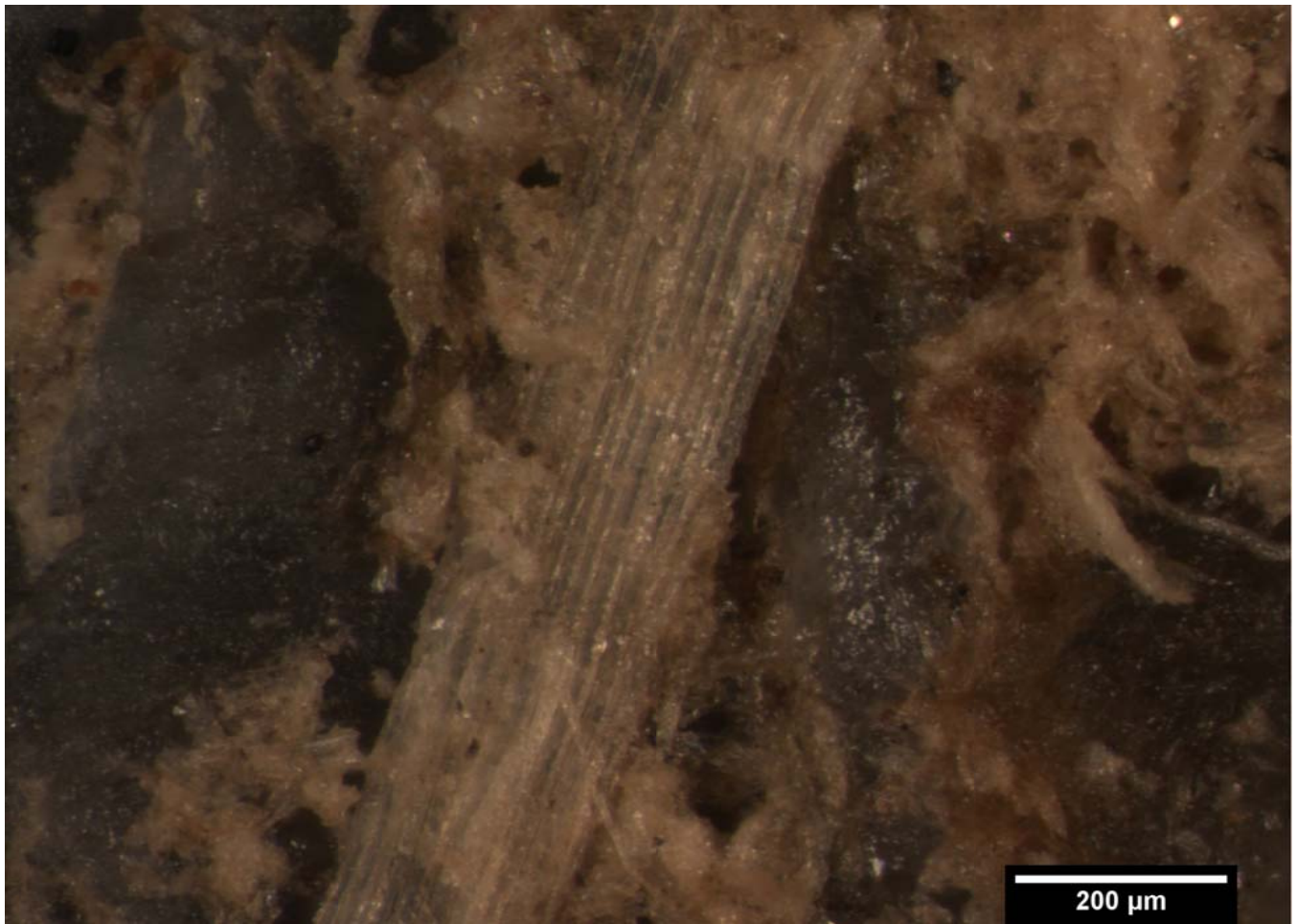
RS10V_i_115_comp.tif



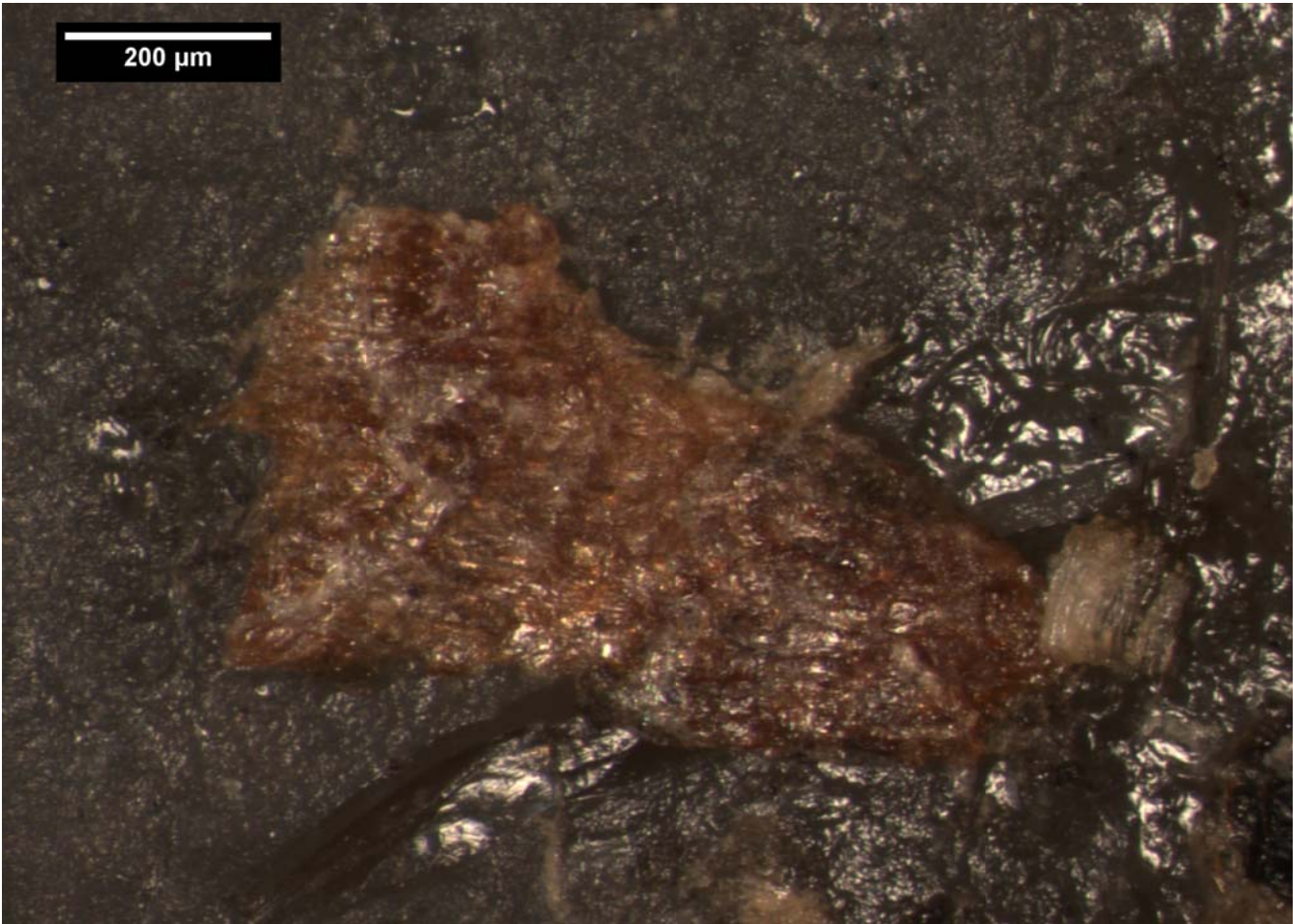
RS10V_j_115_comp.tif





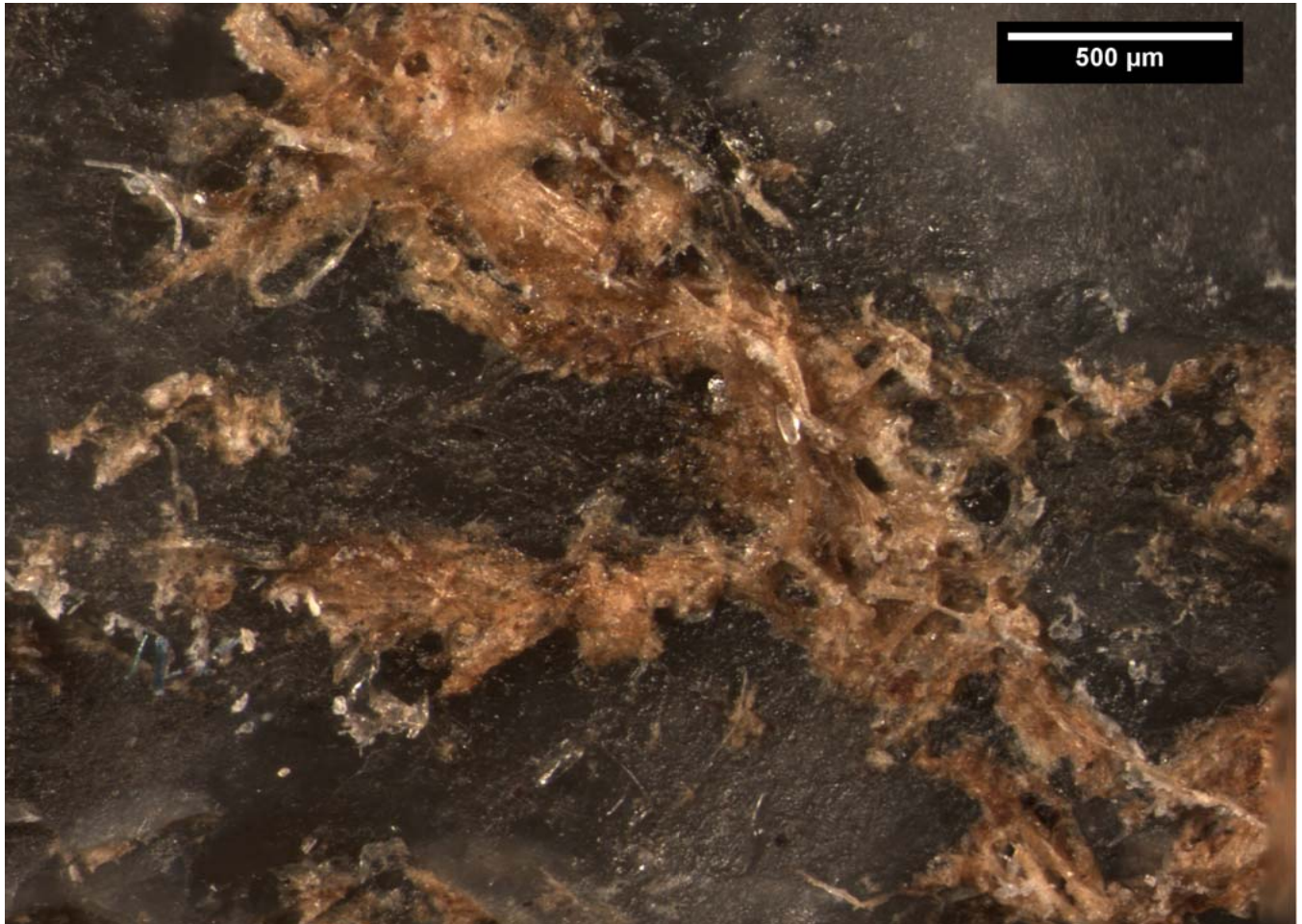
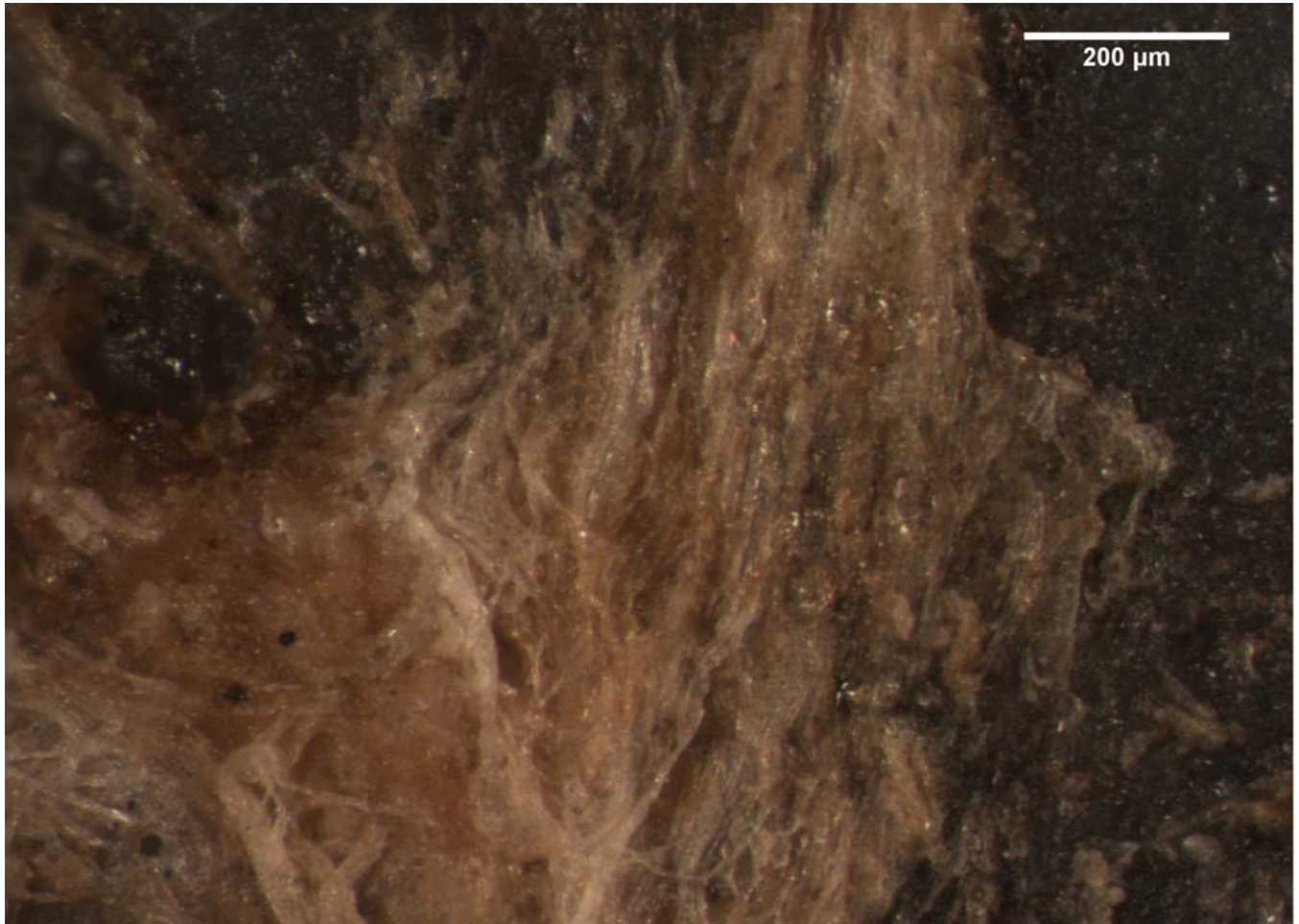


200 μm

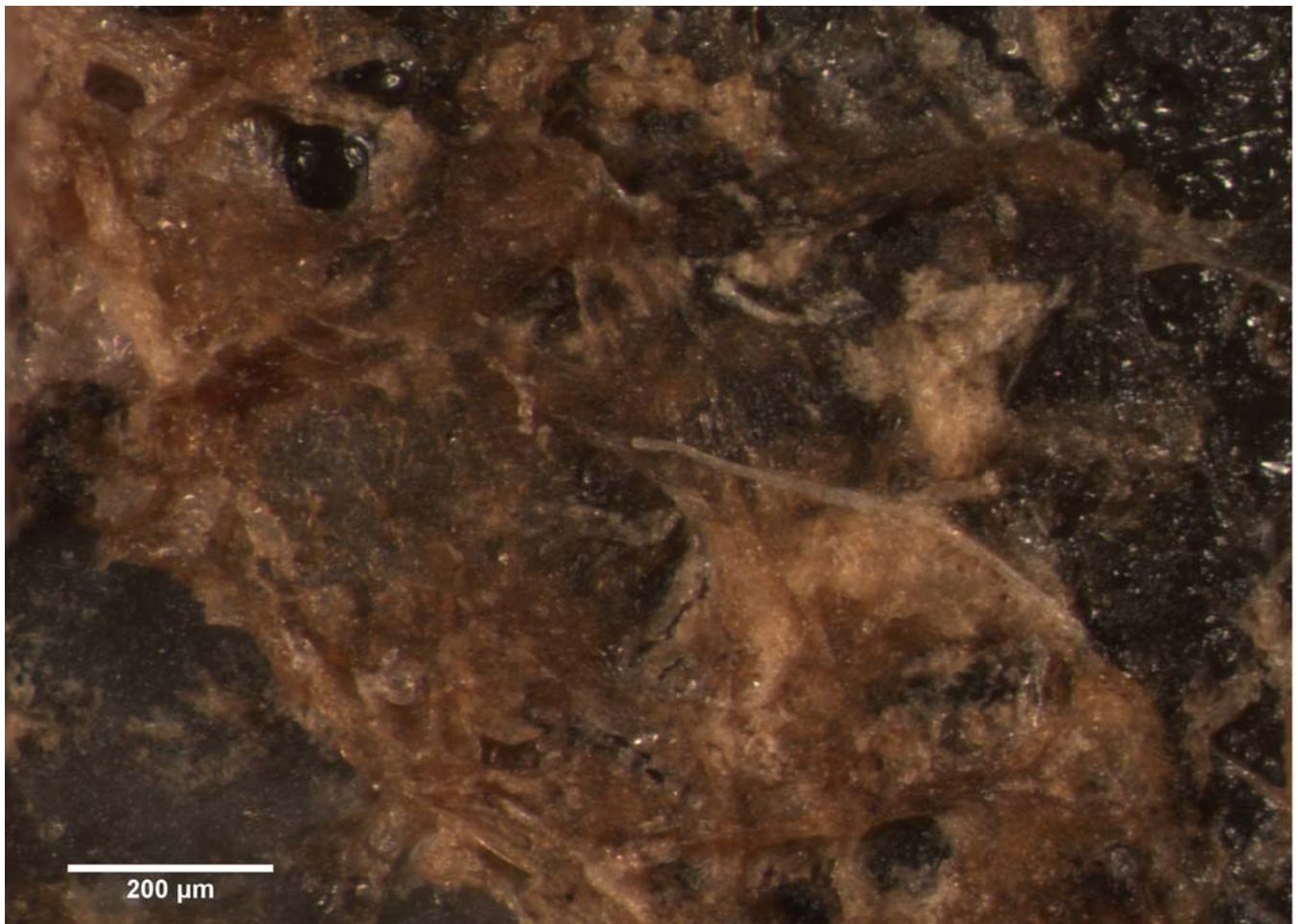
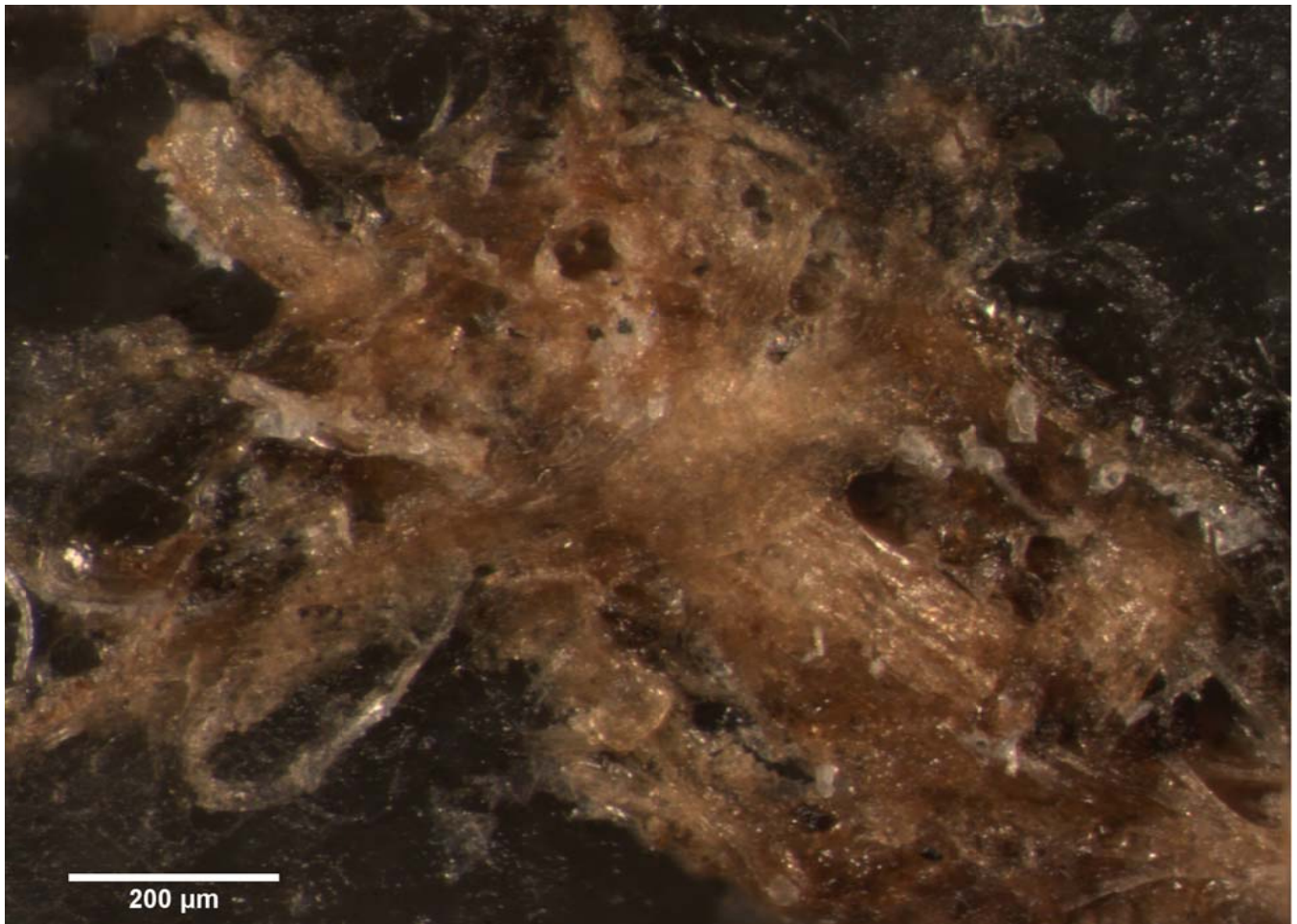


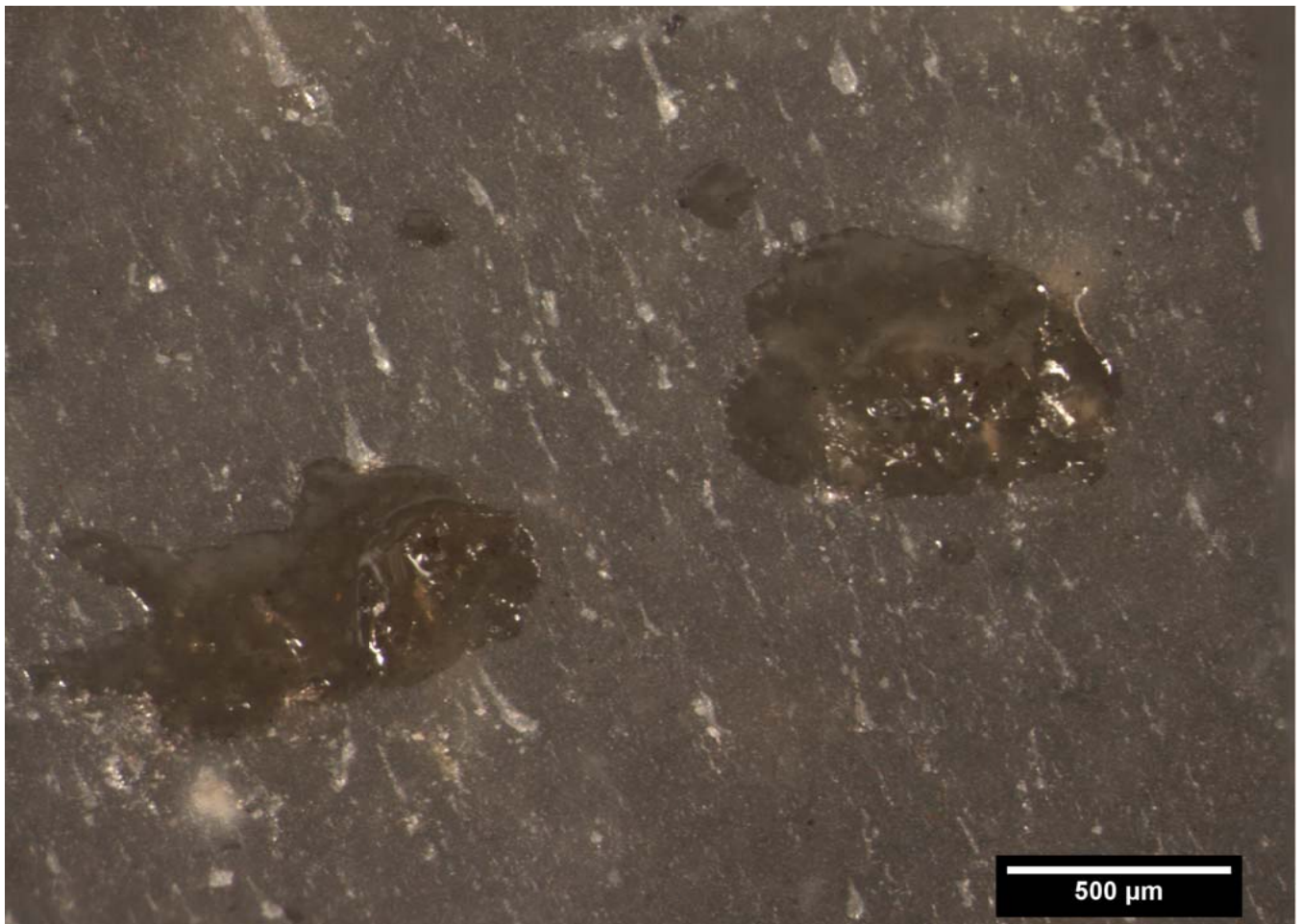
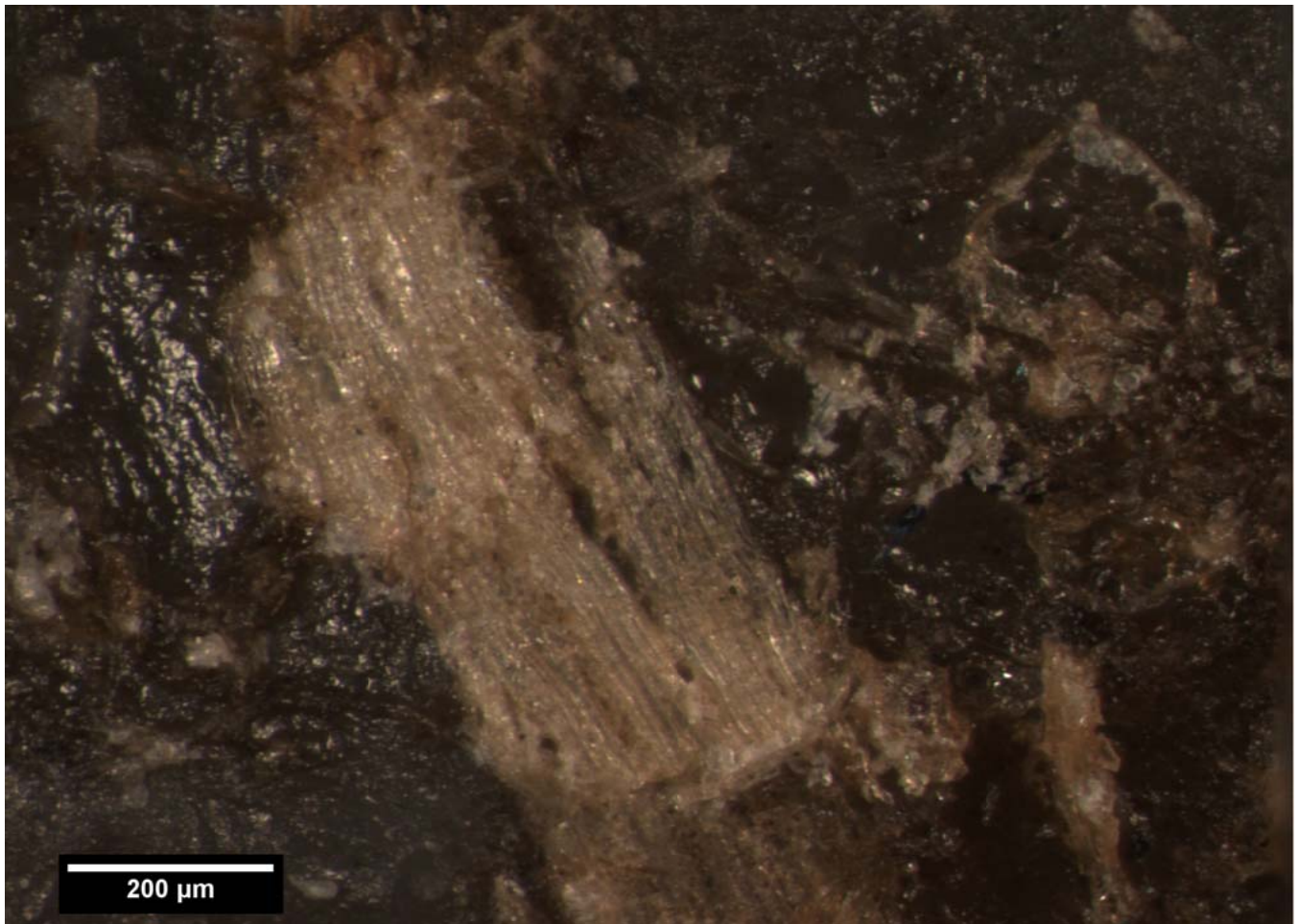
500 μm

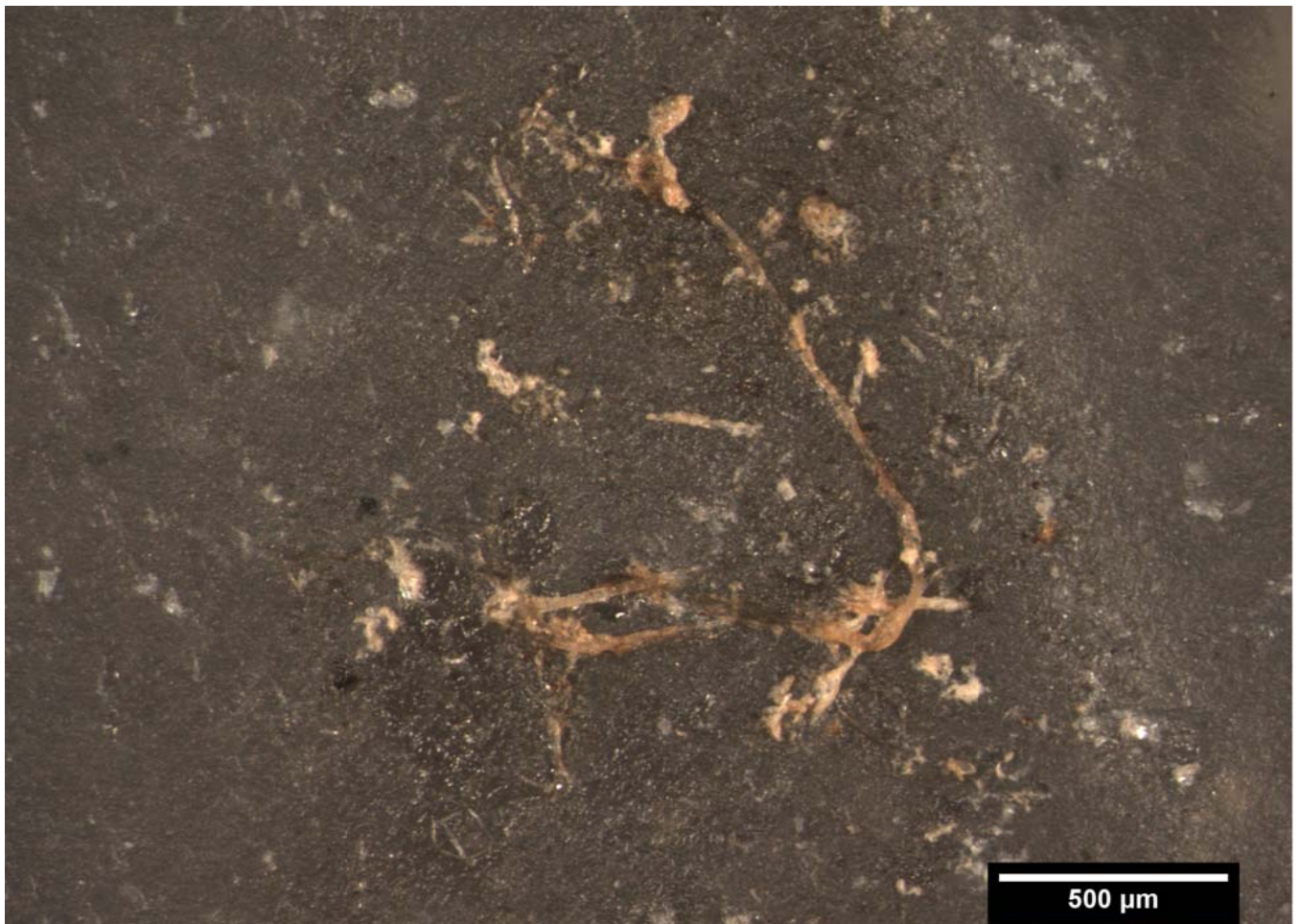
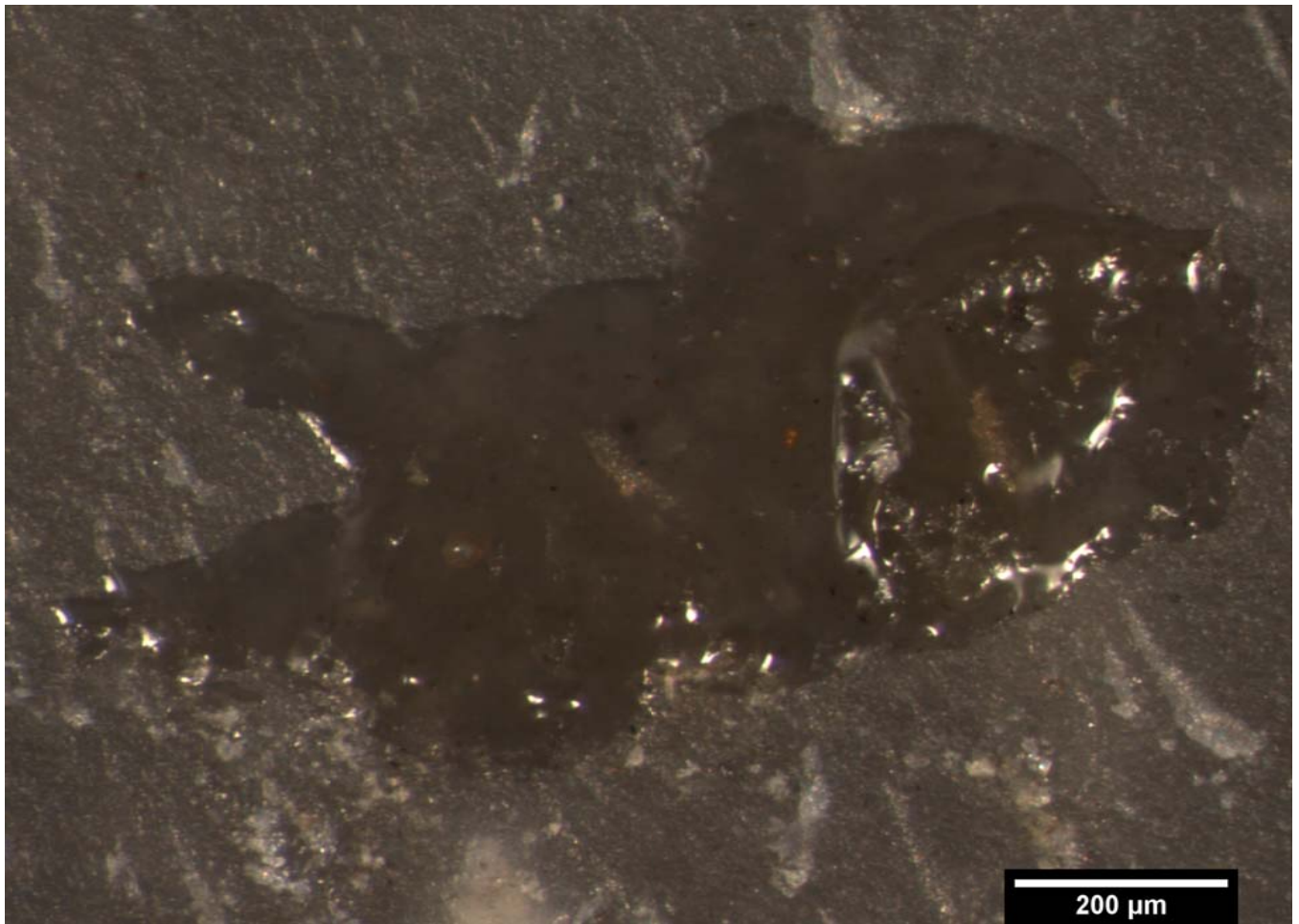


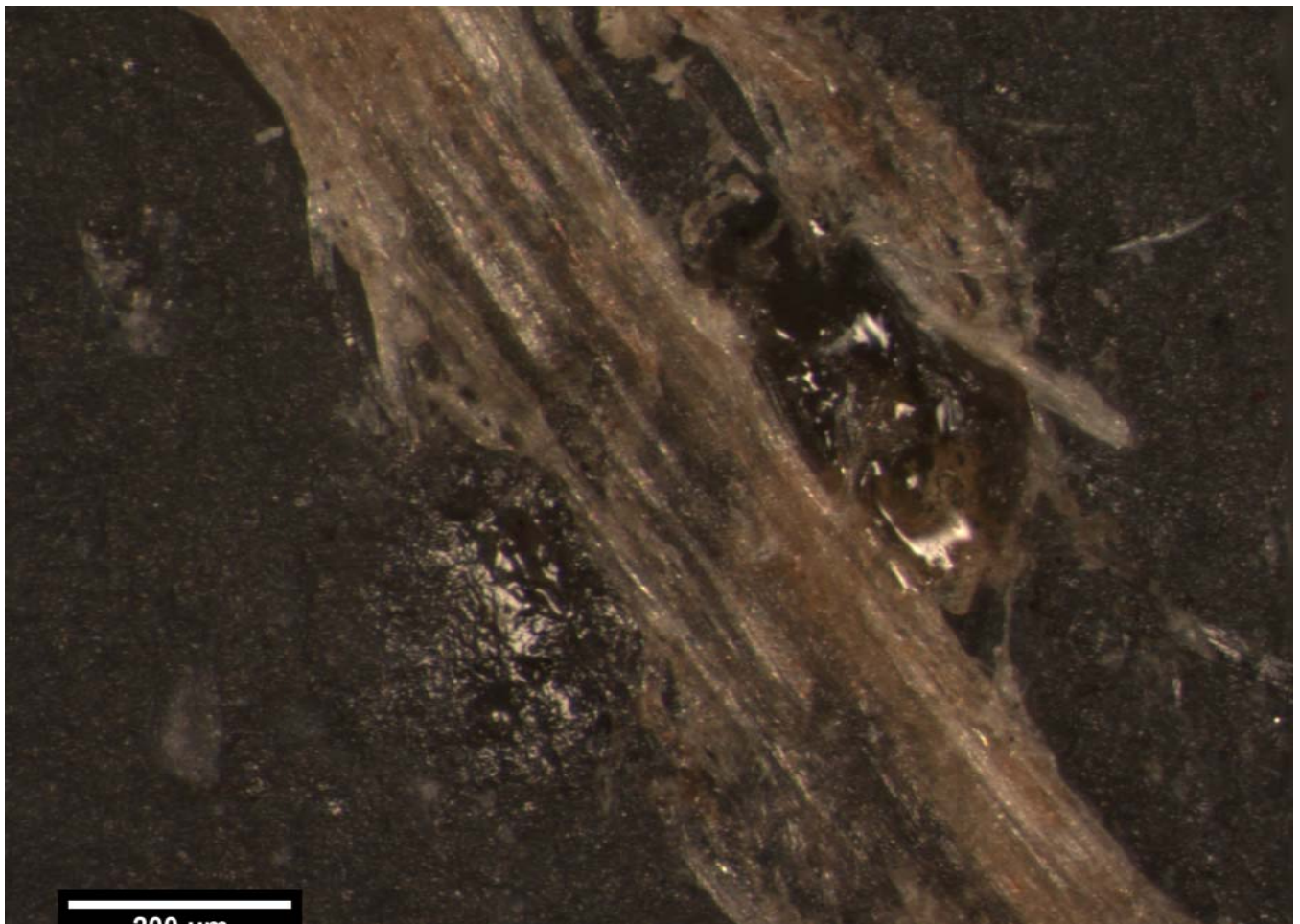
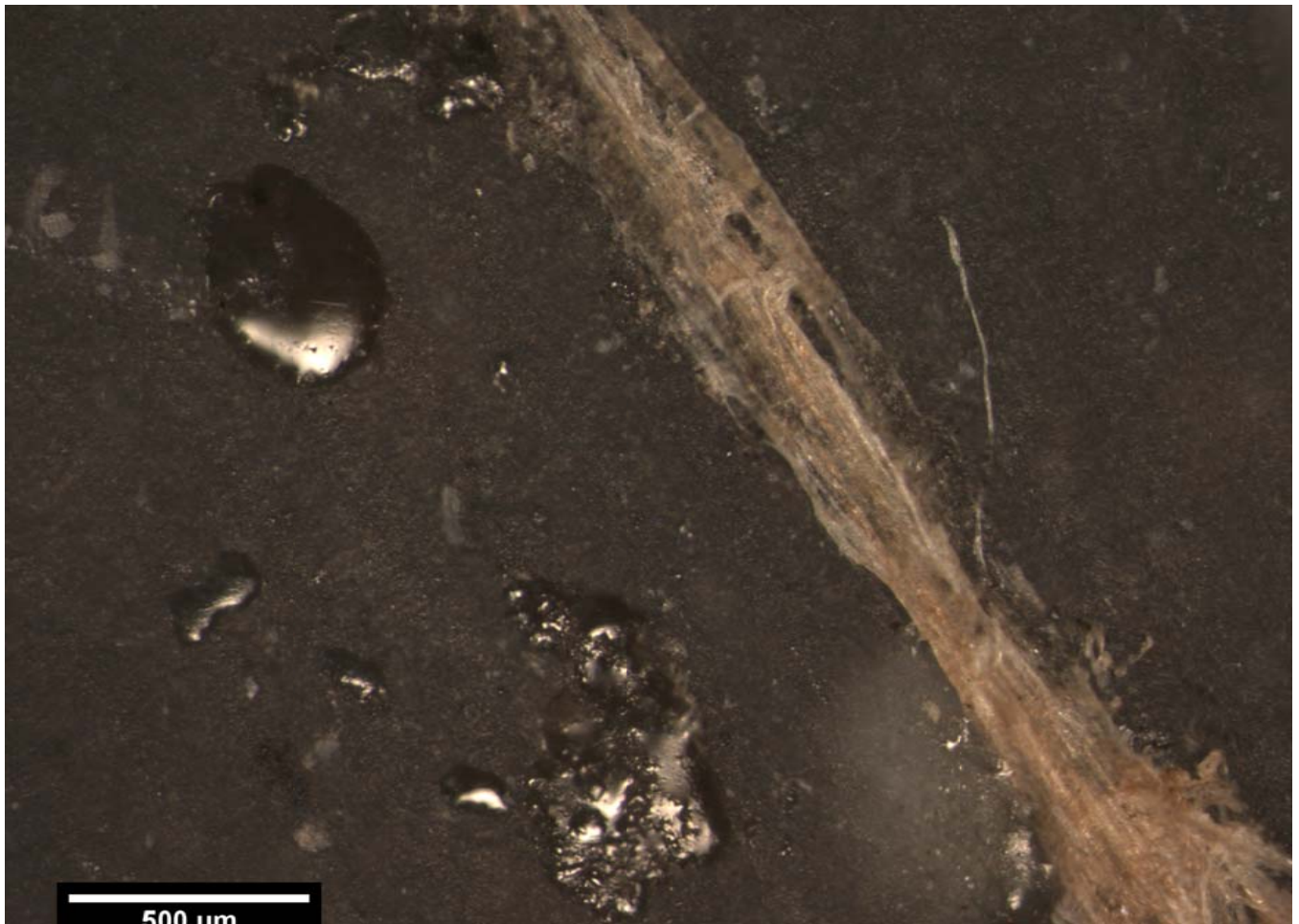


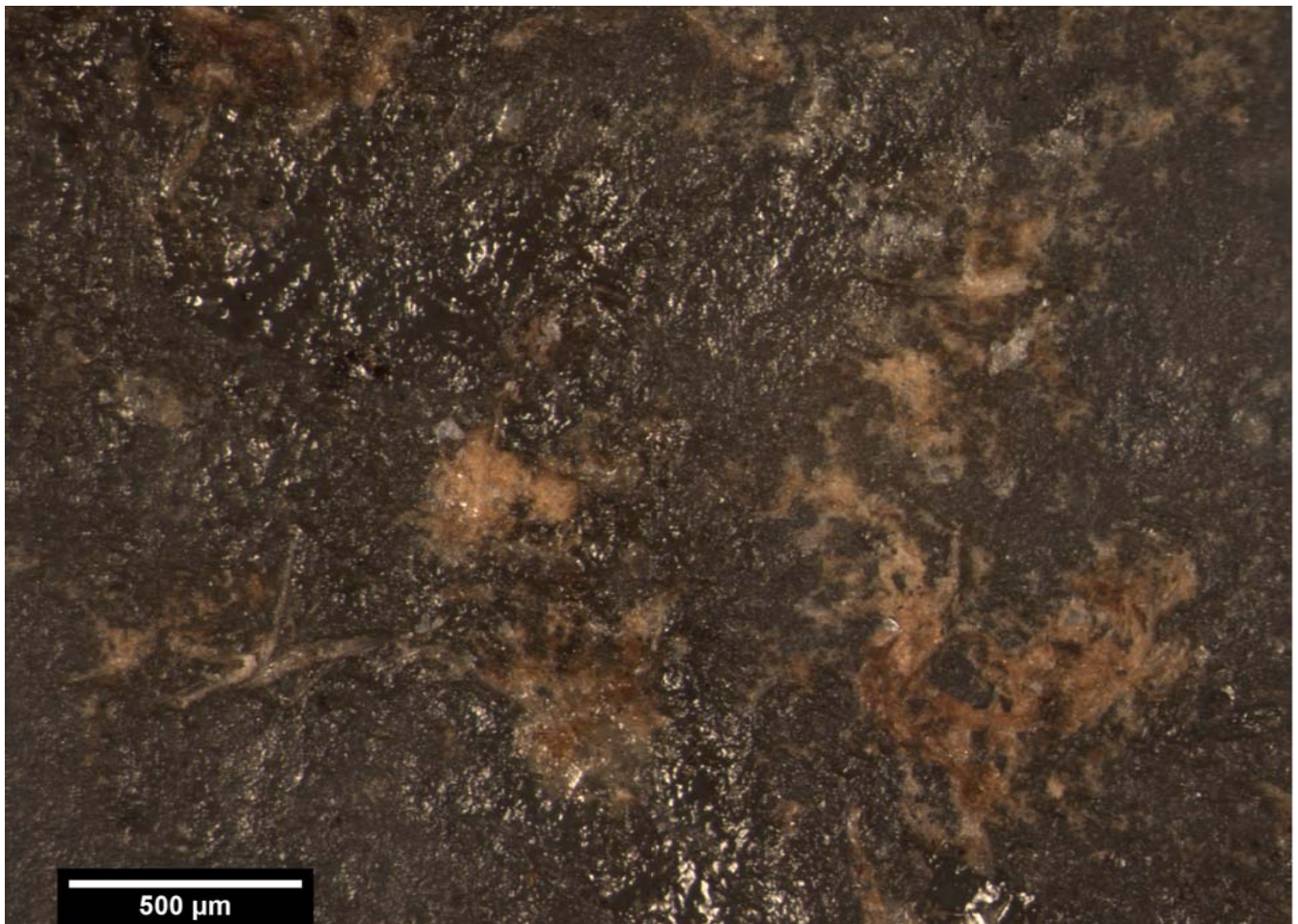


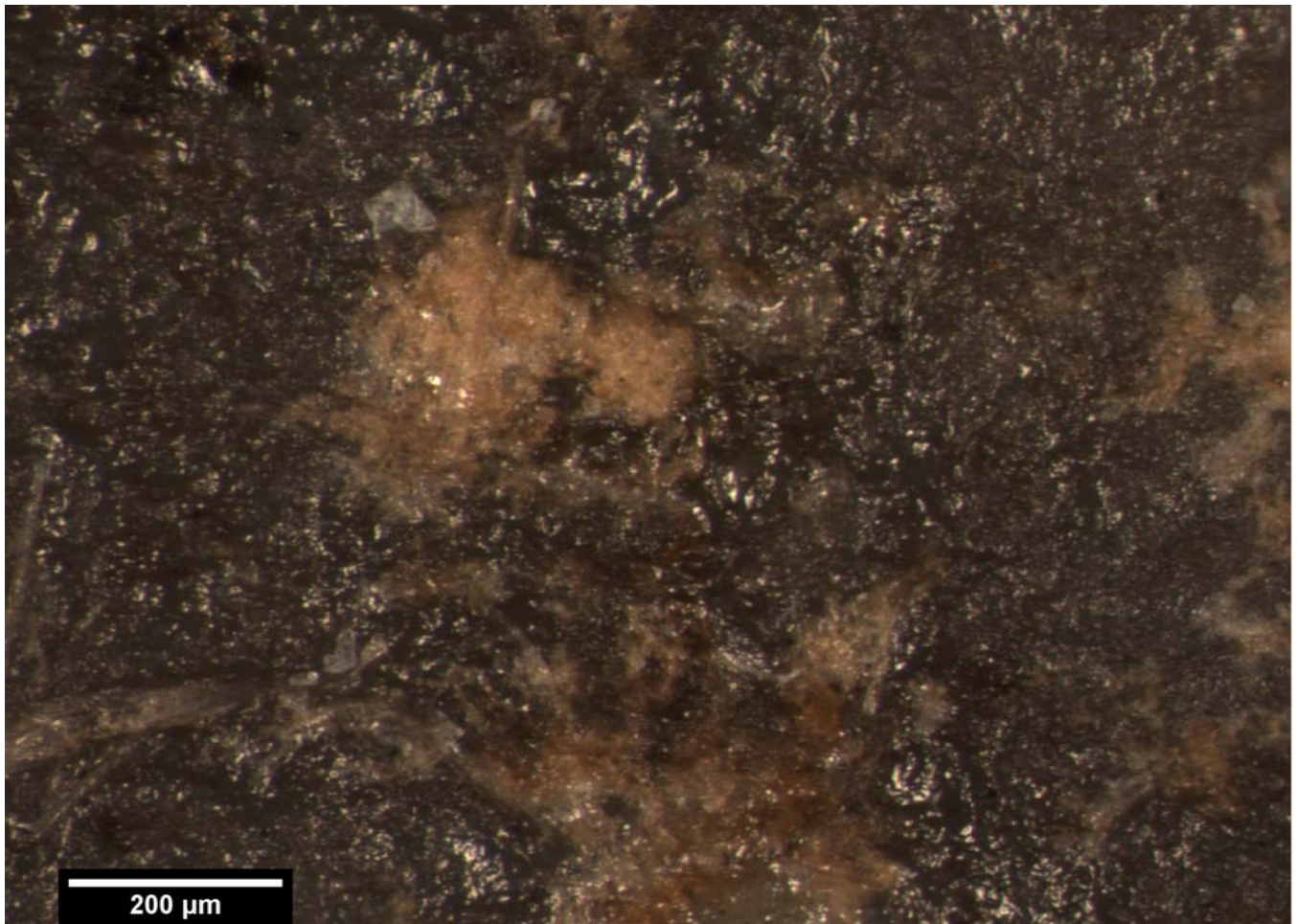


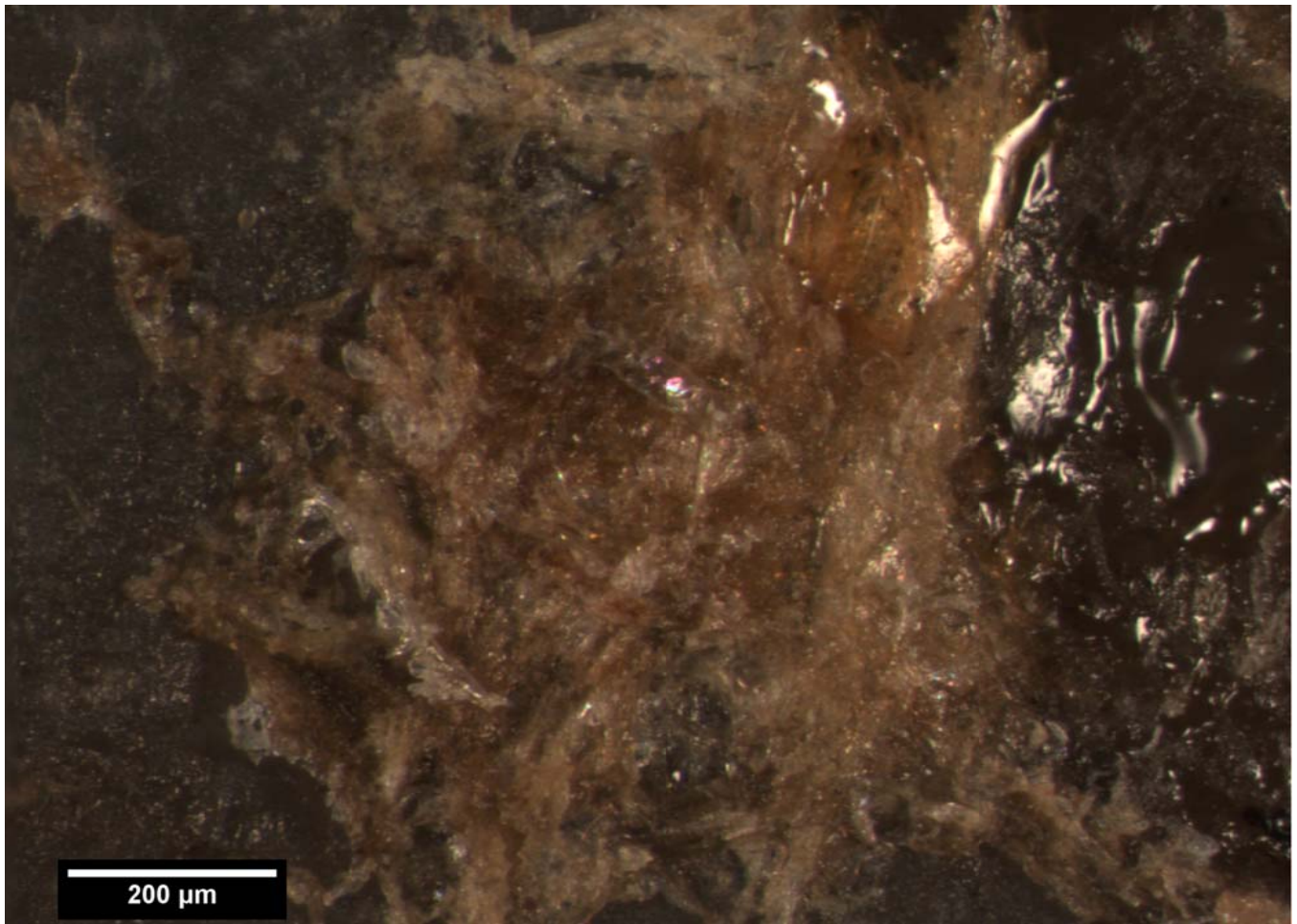


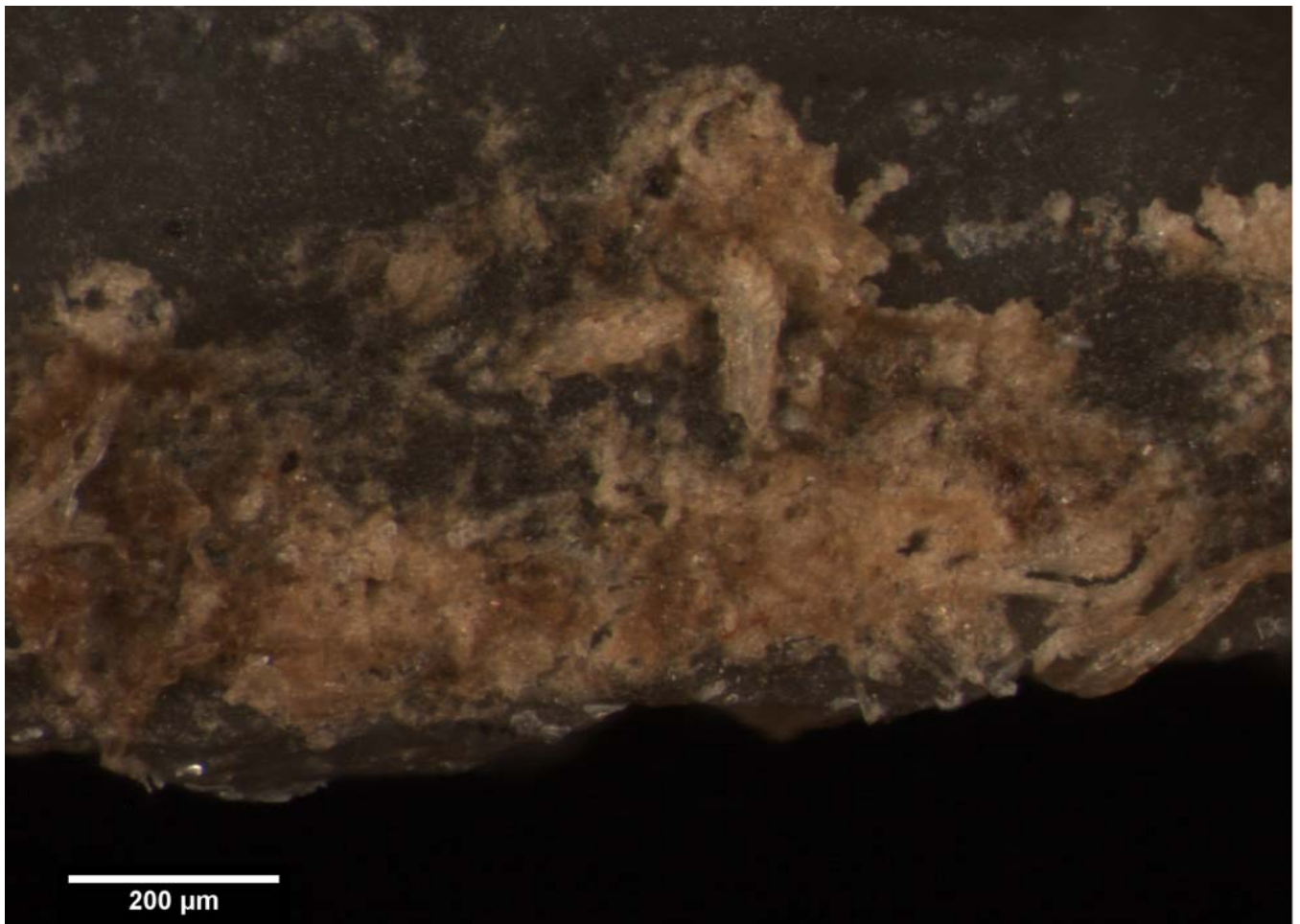
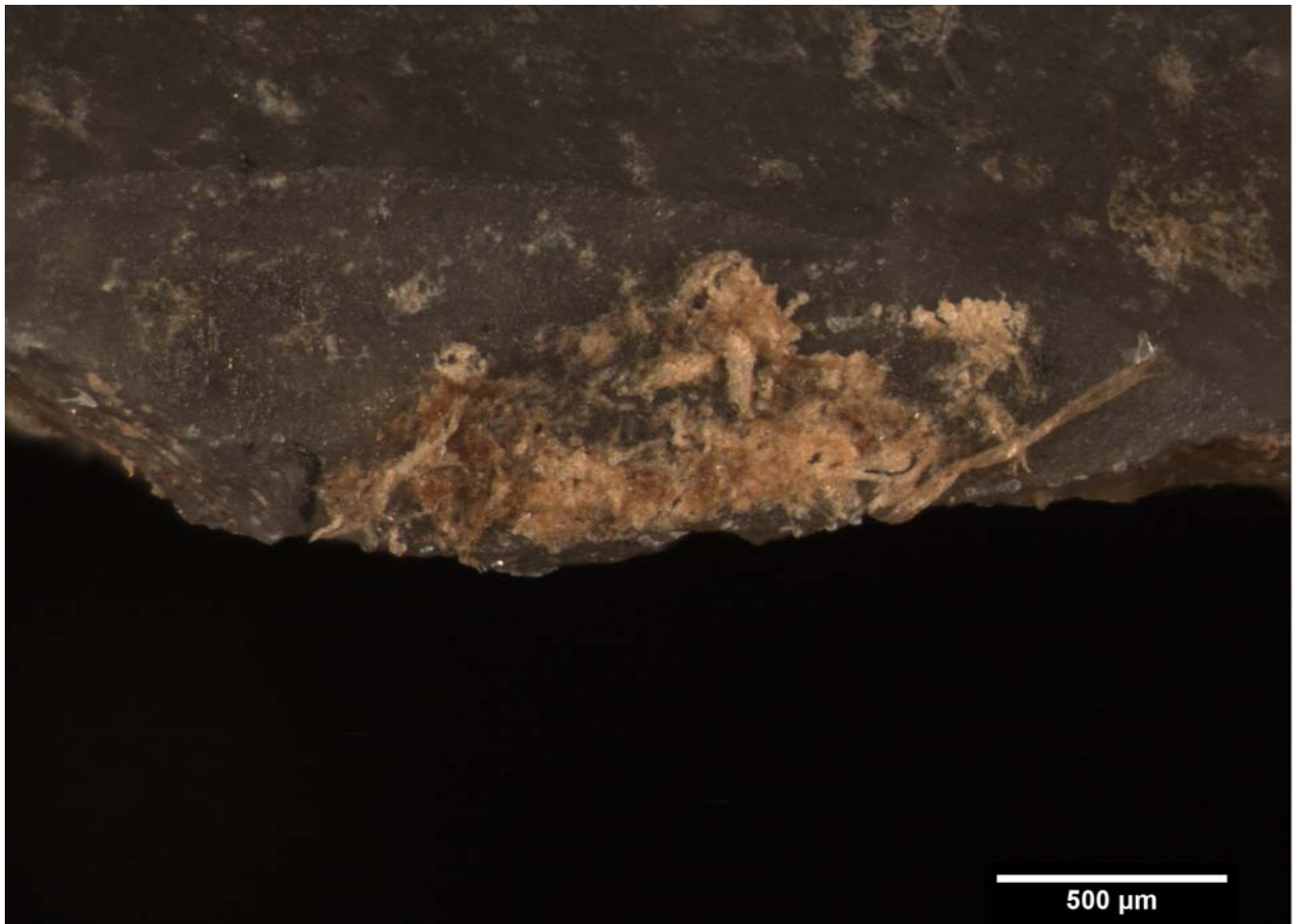














200 μm

